

# ARVICON

Crafted By Nature

L-43, Connaught Circus, New Delhi-110001, INDIA

Phone: +91-11-23416350, 2341 3351

Fax : +91-11-41536054, 23416357

Email: [arvicon@arvicon.com](mailto:arvicon@arvicon.com)

[www.arvicon.com](http://www.arvicon.com)



# ARVICON

Crafted By Nature







ARVICON

Crafted By Nature

ARVICON

Crafted By Nature

## About Arvicon

We are Arvind Construction Company, a company with a progressive and professional approach aiming at undertaking civil construction works in India as well as abroad. Our company is one of the leading construction organizations in the Indian sub-continent and have successfully executed various construction jobs of high reputation both in the country as well as abroad. We had started with an annual turnover of about Rs.2 Million (Rs.20 lacs) in the first few years, which has now grown to an annual turnover of Rs.14720 Million (Rs.147 crores) in the recent past. We have also signed Five MOU's with the Himachal Government for setting up Mini Hydel Projects, totaling to about 15 MW in Sirmour District on Build-Own-and-Operate-Basis.

Established in the year 1962, at New Delhi, we have consistently worked with the objective of business ethics and management techniques and have made an all-round growth in activities of diversified nature. As an organization, we have successfully diversified into mining of Chrome Ore and Iron Ore and manufacture of Concrete Sleepers for Railway, Health Care, Investment Finance activities and Exports of Natural stone. Our subsidiary Arvicon International is one of India's prime natural stone mining & processing company.

## About Arvicon International

Arvicon International is among the top 5 natural stone exporters in North India and is exporting more than 1800 TEU's annually. It offers marble, granite, sandstone and limestone in forms of tiles, blocks, slabs, mosaics, natural stone tiles, natural stone floor tiles, natural stone wall tiles, etc. The array of natural stones offered is known for more exacting standard and ultimate beauty & endurance. The company believes in continually upgrading its processing techniques and embracing the latest technology to enhance product quality & variety. Arvicon directly employees 75 professionally qualified trained professionals and executives and indirectly through sub contractor and sub supplier, there are more than 800 workers working exclusively for Arvicon International. The company has developed and invested in substantial infrastructure and stocks to meet the requirement of its customers. During the several years of industry presence years, Arvicon has gained diverse experience of working with varied clients and meeting their specific requirement.

## Our Infrastructure

Arvicon has a well laid processing unit at Hattipura, Bundi, which caters to the varied and specific demands of natural stone processing. The facility are well equipped with efficient machines to process natural stones material and deliver optimum variety & finishing. The company has its branch office in Kota, Rajasthan, which primarily coordinates with all mines and site units. It also has its stock yard in Kota Industrial Area, which specifically caters to materials coming from mines outside the state of Rajasthan. The other stockyard is at Bijolia Mines Area, which is situated almost in the center of all the sandstones mines near Kota and is used specifically for hand-cut tiles.

With corporate office at Delhi, the company executes all it's product designing and export monitoring from this office. Well equipped facility and efficient networking has enabled Arvicon to export Indian natural stones across all markets in Europe and Latin and Southern America.



# TILES

Inspired  
by  
colors  
of nature

floor | wall | elevation



- 37 Quartz Dark Grey
- 38 Riverside Mocha
- 39 Riverside Pearl
- 40 Quartzite White
- 41 Black Mustang
- 42 Kandla Grey
- 43 Cappuccino Grey
- 44 Cappuccino Beige
- 45 Random Wood
- 46 Belgium Grey
- 47 Mountain White
- 48 Mountain Black
- 49 Mountain Chocolate
- 50 Mountain Sand
- 51 Limestone Crema
- 52 Limestone Grey
- 53 Fossil Grey
- 54 Fossil Black
- 55 Earthcore Grey

- 56 Country Silver
- 57 Blue Stone Light Grey
- 58 Blue Stone Dark Grey
- 59 Quartz White
- 60 Quartz Light Grey
- 61 Anthracite

## FLOOR OUTDOOR TILE



www.arvicon.com

## ARVICON

Crafted By Nature

### Finish

R-11  
Antislip  
Tile

Thickness:

600x600, 900x600, 1200x600,  
800x800 , Patio Pack



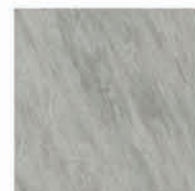
600x1200MM



600x900MM



800x800MM



600x600MM



www.arvicon.com



ARVICON  
Crafted by Nature

Finish

R-11  
Antislip  
Tile 20 mm



### QUARTZ DARK GREY



Available sizes | 1200x600, 900x600  
600x600, 1200x295  
Patio Packs

www.arvicon.com



ARVICON  
Crafted by Nature

Finish

R-11  
Antislip  
Tile 20 mm



### RIVERSIDE MOCHA



Available sizes | 1200x600, 900x600  
600x600, 1200x295  
Patio Packs

www.arvicon.com





ARVICON  
Created by Nature

Finish

**R-11**  
**Antislip**  
Tile 20 mm



### RIVERSIDE PEARL



Available sizes | 1200x600, 900x600  
600x600, 1200x295  
Patio Packs

[www.arvicon.com](http://www.arvicon.com)



ARVICON  
Created by Nature

Finish

**R-11**  
**Antislip**  
Tile 20 mm



### QUARTZITE WHITE



Available sizes | 1200x600, 900x600  
600x600, 1200x295  
Patio Packs

[www.arvicon.com](http://www.arvicon.com)

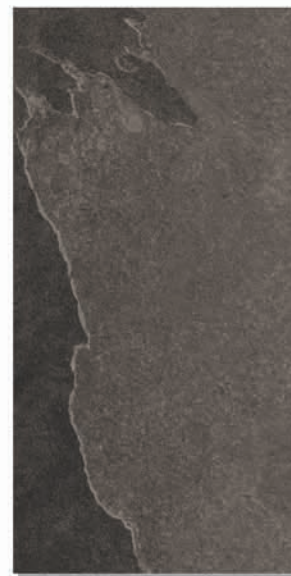
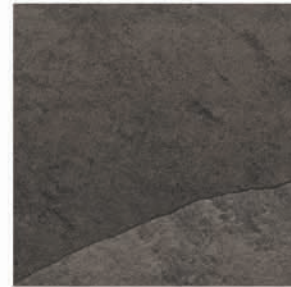




ARVICON  
Created by Nature

Finish

**R-11**  
**Antislip**  
Tile 20 mm



### BLACK MUSTANG



Available sizes | 1200x600, 900x600  
600x600, 1200x295  
Patio Packs

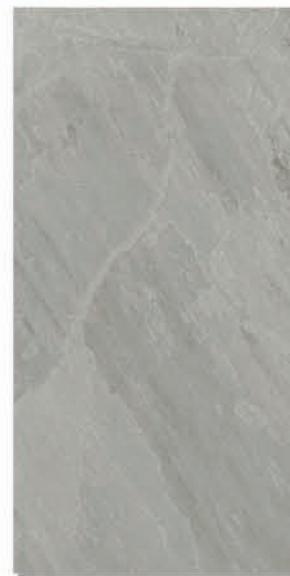
[www.arvicon.com](http://www.arvicon.com)



ARVICON  
Created by Nature

Finish

**R-11**  
**Antislip**  
Tile 20 mm



### KANDLA GREY



Available sizes | 1200x600, 900x600  
600x600, 1200x295  
Patio Packs

[www.arvicon.com](http://www.arvicon.com)



ARVICON  
Crafted by Nature

Finish

R-11  
Antislip  
Tile 20 mm



### CAPPUCCINO GREY



Available sizes | 1200x600, 900x600  
600x600, 1200x295  
Patio Packs

www.arvicon.com



ARVICON  
Crafted by Nature

Finish

R-11  
Antislip  
Tile 20 mm



### CAPPUCCINO BEIGE



Available sizes | 1200x600, 900x600  
600x600, 1200x295  
Patio Packs

www.arvicon.com





ARVICON  
Crafted by Nature

Finish

**R-11**  
**Antislip**  
Tile 20 mm



### RANDOM WOOD



Available sizes | 1200x600, 900x600  
600x600, 1200x295  
Patio Packs

www.arvicon.com



ARVICON  
Crafted by Nature

Finish

**R-11**  
**Antislip**  
Tile 20 mm



### BELGIUM GREY



Available sizes | 1200x600, 900x600  
600x600, 1200x295  
Patio Packs

www.arvicon.com





ARVICON  
Crafted by Nature

Finish

R-11  
Antislip  
Tile 20 mm



### MOUNTAIN WHITE



Available sizes | 1200x600, 900x600  
600x600, 1200x295  
Patio Packs

www.arvicon.com



ARVICON  
Crafted by Nature

Finish

R-11  
Antislip  
Tile 20 mm



### MOUNTAIN BLACK



Available sizes | 1200x600, 900x600  
600x600, 1200x295  
Patio Packs

www.arvicon.com





ARVICON  
Crafted by Nature

Finish

R-11  
Antislip  
Tile 20 mm



### MOUNTAIN CHOCOLATE



Available sizes | 1200x600, 900x600  
600x600, 1200x295  
Patio Packs

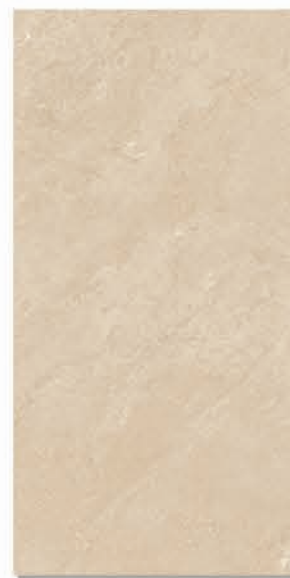
www.arvicon.com



ARVICON  
Crafted by Nature

Finish

R-11  
Antislip  
Tile 20 mm



### MOUNTAIN SAND



Available sizes | 1200x600, 900x600  
600x600, 1200x295  
Patio Packs

www.arvicon.com





ARVICON  
Crafted by Nature

Finish

**R-11**  
**Antislip**  
Tile 20 mm



### LIMESTONE CREMA



Available sizes | 1200x600, 900x600  
600x600, 1200x295  
Patio Packs

www.arvicon.com



ARVICON  
Crafted by Nature

Finish

**R-11**  
**Antislip**  
Tile 20 mm



### LIMESTONE GREY



Available sizes | 1200x600, 900x600  
600x600, 1200x295  
Patio Packs

www.arvicon.com





ARVICON  
Crafted by Nature

Finish

R-11  
Antislip  
Tile 20 mm



FOSSIL GREY



Available sizes | 1200x600, 900x600  
600x600, 1200x295  
Patio Packs

www.arvicon.com



153

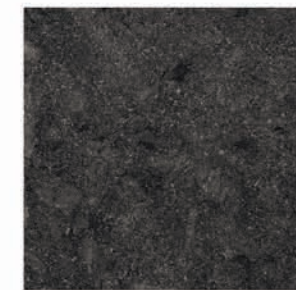


154

ARVICON  
Crafted by Nature

Finish

R-11  
Antislip  
Tile 20 mm



FOSSIL BLACK



Available sizes | 1200x600, 900x600  
600x600, 1200x295  
Patio Packs

www.arvicon.com



ARVICON  
Crafted by Nature

Finish

R-11  
Antislip  
Tile 20 mm



### EARTHCORE GREY



Available sizes | 1200x600, 900x600  
600x600, 1200x295  
Patio Packs

www.arvicon.com



ARVICON  
Crafted by Nature

Finish

R-11  
Antislip  
Tile 20 mm



### COUNTRY SILVER



Available sizes | 1200x600, 900x600  
600x600, 1200x295  
Patio Packs

www.arvicon.com



ARVICON  
Crafted by Nature

Finish

R-11  
Antislip  
Tile 20 mm



BLUE STONE  
LIGHT GREY



Available sizes | 1200x600, 900x600  
600x600, 1200x295  
Patio Packs

www.arvicon.com

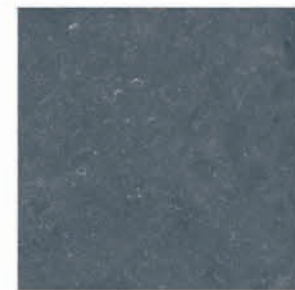


57

ARVICON  
Crafted by Nature

Finish

R-11  
Antislip  
Tile 20 mm



BLUE STONE  
DARK GREY



Available sizes | 1200x600, 900x600  
600x600, 1200x295  
Patio Packs

www.arvicon.com



58



ARVICON  
Crafted by Nature

Finish

R-11  
Antislip  
Tile 20 mm



QUARTZ WHITE



Available sizes | 1200x600, 900x600  
600x600, 1200x295  
Patio Packs

www.arvicon.com



159

ARVICON  
Crafted by Nature

Finish

R-11  
Antislip  
Tile 20 mm



QUARTZ LIGHT GREY



Available sizes | 1200x600, 900x600  
600x600, 1200x295  
Patio Packs

www.arvicon.com



160





ANTHRACITE



Available sizes | 1200x600, 900x600  
600x600, 1200x295  
Patio Packs



TECHNICAL SPECIFICATION

NOMINAL SIZE : 60 X 60 CM  
THICKNESS : 20.0mm  
TYPE OF PRODUCT : OUTDOOR TILE (HEAVY DUTY)  
NATURE OF SURFACE : FULL-BODY R11  
REF. STANDARD : INTERNATIONAL STANDARD ISO 13006:2015 GROUP B I<sub>1</sub>

TEST DESCRIPTION	STANDARD TEST METHOD	STANDARD REQUIREMENTS	GRANOLAND SPECIFICATION FOR PRODUCTION
LENGTH	BS EN ISO 10545-2	±0.60%	±0.07% (±0.4MM)
WIDTH	BS EN ISO 10545-2	±0.60%	±0.07% (±0.4MM)
THICKNESS	BS EN ISO 10545-2	±5%	±4.0% (0.8MM)
STRAIGHTNESS OF SIDES	BS EN ISO 10545-2	±0.5%	±0.06% (±0.4MM)
RECTANGULARITY	BS EN ISO 10545-2	±0.5%	±0.12%
SURFACE FLATNESS :CENTARE CURVATURE	BS EN ISO 10545-2	±0.5%	±0.15% (+1.0MM) ±0.07% (-0.5 MM)
SURFACE FLATNESS :EDGE CURVATURE	BS EN ISO 10545-2	±0.5%	+0.17% (+1.0MM) +0.08% (+0.5MM)
SURFACE FLATNESS :WARPAGE	BS EN ISO 10545-2	±0.5%	-0.15% (1.0MM) -0.07% (-0.5 MM)
WATER ABSORPTION	BS EN ISO 10545-3	E ≤ 0.5%	E ≤ 0.1%
BREAKING STRENGTH	BS EN ISO 10545-4	≥ 1300 N	≥ 4500 N
MODULUS OF RUPTURE	BS EN ISO 10545-4	≥ 35 N/MM <sup>2</sup>	≥ 36 N/MM <sup>2</sup>
RESISTANCE OF SURFACE ABRASION	BS EN ISO 10545-7	MANUFACTURE TO STATE ABRASION CLASS	PEI CLASS -V
COEFFICIENT OF LINER THERMAL EXPANSION	BS EN ISO 10545-8	9 X 10 <sup>-6</sup> K <sup>-1</sup> MAX	≤ 4 X 10 <sup>-6</sup> K <sup>-1</sup> MAX
RESISTANCE THERMAL SHOCK	BS EN ISO 10545-9	MINI 10 CYCLES	10 CYCLES
CRAZING RESISTANCE	BS EN ISO 10545-11	MINI 4 CYCLES AT (750 ±20)Kpa BAR	4 CYCLES PASS
RESISTANCE TO HOUSE HOLD CHEMICALS & SWIMMING POOL SLATS	BS EN ISO 10545-13	MINIMUM CLASS GC	CLASS GA
RESISTANCE TO LOW CONCENTRATIONS ACIDS & ALKALIS	BS EN ISO 10545-13	MINIMUM CLASS GLC	CLASS GLA
RESISTANCE TO STAINS	BS EN ISO 10545-14	MINIMUM CLASS 3	CLASS 4

NOMINAL SIZE : 60 X 90 CM  
THICKNESS : 20.0mm  
TYPE OF PRODUCT : OUTDOOR TILE (HEAVY DUTY)  
NATURE OF SURFACE : FULL-BODY R11  
REF. STANDARD : INTERNATIONAL STANDARD ISO 13006:2015 GROUP B I<sub>1</sub>

TEST DESCRIPTION	STANDARD TEST METHOD	STANDARD REQUIREMENTS	GRANOLAND SPECIFICATION FOR PRODUCTION
LENGTH	BS EN ISO 10545-2	±0.60%	±0.07% (±0.4MM)
WIDTH	BS EN ISO 10545-2	±0.60%	±0.07% (±0.6MM)
THICKNESS	BS EN ISO 10545-2	±5%	±4.0% (0.8MM)
STRAIGHTNESS OF SIDES	BS EN ISO 10545-2	±0.5%	±0.06% (±0.4MM)
RECTANGULARITY	BS EN ISO 10545-2	±0.5%	±0.12%
SURFACE FLATNESS :CENTARE CURVATURE	BS EN ISO 10545-2	±0.5%	±0.15% (+1.0MM) ±0.07% (-0.5 MM)
SURFACE FLATNESS :EDGE CURVATURE	BS EN ISO 10545-2	±0.5%	+0.17% (+1.0MM) +0.08% (+0.5MM)
SURFACE FLATNESS :WARPAGE	BS EN ISO 10545-2	±0.5%	-0.15% (1.0MM) -0.07% (-0.5 MM)
WATER ABSORPTION	BS EN ISO 10545-3	E ≤ 0.5%	E ≤ 0.1%
BREAKING STRENGTH	BS EN ISO 10545-4	≥ 1300 N	≥ 4500 N
MODULUS OF RUPTURE	BS EN ISO 10545-4	≥ 35 N/MM <sup>2</sup>	≥ 35 N/MM <sup>2</sup>
RESISTANCE OF SURFACE ABRASION	BS EN ISO 10545-7	MANUFACTURE TO STATE ABRASION CLASS	PEI CLASS -V
COEFFICIENT OF LINER THERMAL EXPANSION	BS EN ISO 10545-8	9 X 10 <sup>-6</sup> K <sup>-1</sup> MAX	≤ 4 X 10 <sup>-6</sup> K <sup>-1</sup> MAX
RESISTANCE THERMAL SHOCK	BS EN ISO 10545-9	MINI 10 CYCLES	10 CYCLES
CRAZING RESISTANCE	BS EN ISO 10545-11	MINI 4 CYCLES AT (750 ±20)Kpa BAR	4 CYCLES PASS
RESISTANCE TO HOUSE HOLD CHEMICALS & SWIMMING POOL SLATS	BS EN ISO 10545-13	MINIMUM CLASS GC	CLASS GA
RESISTANCE TO LOW CONCENTRATIONS ACIDS & ALKALIS	BS EN ISO 10545-13	MINIMUM CLASS GLC	CLASS GLA
RESISTANCE TO STAINS	BS EN ISO 10545-14	MINIMUM CLASS 3	CLASS 4